



DUX Automatic Spray Gun

Standard & Circulating Fluid Supply Models

INSPIRED BY FORMULA THREE RACE CAR ENGINES.

After more than five years of research and development, DUX has reinvented the spray gun from the inside out. By incorporating our patented airflow technology originally used in Formula Three race car engines, we've developed the most innovative breakthrough in spray gun technology in nearly 80 years.

THE DUX GUN PRACTICALLY PAYS FOR ITSELF AFTER JUST ONE JOB.

With the DUX Automatic spray gun, you'll have transfer efficiency improvements of 15-40% over current leading spray technologies, including HVLP. In fact, the coatings savings are so significant your DUX spray gun often pays for itself in the first month of use.

The DUX Automatic spray gun uses a patented technology to reduce overspray and booth "fog." The result is less paint in the air and more paint on the target. This decreases booth filter fouling and hazardous waste disposal fees and can potentially cut the operating cost of a paint line by 50%. Its precision application also reduces the need for masking and containment, decreasing preparation and clean up costs.

EXCEPTIONAL QUALITY

DUX's superior atomization technology enhances finish quality, delivering a better product for your customers and increasing your competitive advantage.

TECHNOLOGY THAT'S EASY TO USE AND EASY ON YOU.

With its short air passages and lightweight body, the DUX Automatic spray gun is compact and easy to mount. Unlike other Automatic spray guns, its weight is centered and balanced. These design features reduce the wear and component fatigue caused by unbalanced heavy spray guns. This means less material settles onto your equipment, making cleanup easier and extending the life of your mechanical parts. The way we see it, clearer air isn't just a regulatory mandate. It's good for business.

IMMEDIATE ROI

- > Reduced coating usage
- > Decreased cleanup costs
- > Faster production speed
- > Energy savings

EASY TO INSTALL

- > Mounting kits available for reciprocators and robotics
- > Lightweight and balanced
- > Reduced maintenance and repair cost on reciprocators and robotic arms
- > Circulating fluid model available
- > Choice of manual or automated fan control

AIR QUALITY COMPLIANCE

- > Drastic reductions in VOC emissions
- > Reduced HazMat clean-up and disposal
- > AQMD compliant by definition
- > Reduced booth fog and overspray

ADVANCED TECHNOLOGY

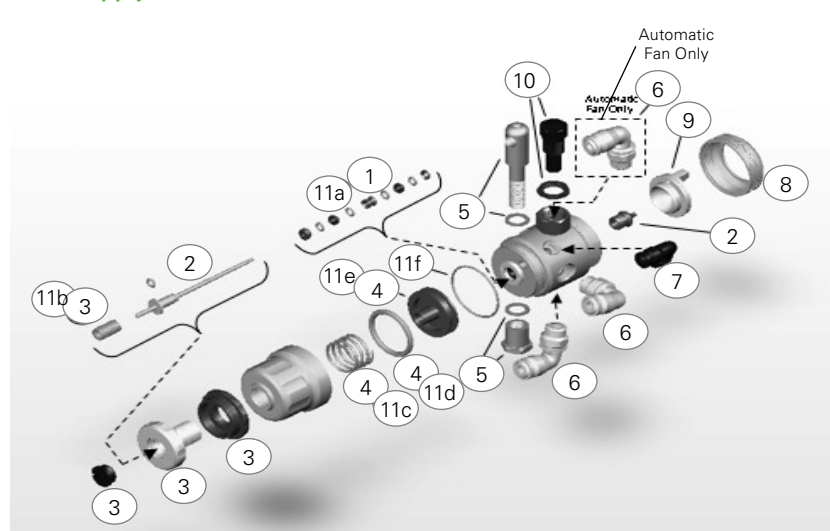
- > Laminar airflow
- > Low pressure and air volume
- > Exceptional atomization
- > Outstanding utility across coatings and applications

HIGHLY CONTROLLED AIRFLOW

See for yourself. Compare the DUX spray gun to any other spray equipment on the market. You'll find that most competing technologies incorporate angular twists and turns within the air passage and long travel distance between the air inlet and air cap. These features create severe air turbulence. Bottom line — it's hard to control and shape air at the air cap when it's out of control inside the gun.

With the DUX spray gun, you'll never have that problem. It is designed with smooth sweeping air passages, fewer obstructions, and shorter distance between the inlet and air cap. The result is minimal air pressure loss through the spray gun and extremely organized and controllable airflow.

DUX AUTOMATIC SPRAY GUN with Standard or Circulating Fluid Supply and either Automatic or Manual Fan Control



| No. | Part | Description | No. | Part | Description |
|-----|--------|-------------------------------------|--------------------|---------------------------|--|
| 1. | 310129 | Fluid Packing Kit | 10. | 310112 | Manual Fan Control Valve w/ locking ring |
| 2. | 310325 | SC Tip/Needle Set (.6mm) | 11. | 310172 | Wearable Parts Replacement Kit |
| | 310326 | SC Tip/Needle Set (.8mm) | | | Includes: |
| | 310327 | SC Tip/Needle Set (1.0mm) | a | | (1) fluid packing kit |
| | 310328 | SC Tip/Needle Set (1.2mm) | b | | (1) needle spring |
| | 310329 | SC Tip/Needle Set (1.4mm) | c | | (1) trigger spring |
| | 310330 | SC Tip/Needle Set (1.6mm) | d | | (1) trigger piston o-ring, 30 mm |
| | 310331 | SC Tip/Needle Set (1.8mm) | e | | (1) trigger piston |
| | 310332 | SC Tip/Needle Set (2.0mm) | f | | (1) trigger housing o-ring, 36 mm |
| | 310333 | SC Tip/Needle Set (2.2mm) | | | |
| 3. | 310115 | Fluid Control Assembly | Accessories | | |
| 4. | 310134 | Trigger Kit | 310174 | DUX 10mm Fluid Tip Driver | |
| | | Mounting Bolt (multiple options) | 310205 | Spray Gun Lube (8 oz.) | |
| 5. | 410326 | 3/8" Push to Connect Swivel Fitting | 310206 | Spray Gun Lube (2 oz.) | |
| 6. | 410325 | 1/4" Push to Connect Swivel Fitting | 310173 | DUX Packing Tool | |
| 7. | 310156 | Air Cap Ring | 310309 | DUX Multi-Tool Wrench | |
| 8. | 310149 | Air Cap, A0 Low Solids (Alum) | 310175 | Exterior Cleaning Brush | |
| 9. | 310150 | Air Cap, A1 General Purpose (Alum) | 310176 | Fluid Tube Cleaning Brush | |
| | 310151 | Air Cap, A1 General Purpose (SS) | | | |
| | 310227 | Air Cap, A2 High Solids (Alum) | | | |
| | 310233 | Air Cap Tester, A0T | | | |
| | 310230 | Air Cap Tester, A1T | | | |
| | 310232 | Air Cap Tester A2T | | | |

DUX AUTOMATIC CONFIGURATIONS

| | |
|--------------|-------------------------|
| FLUID SUPPLY | Standard or Circulating |
| FAN CONTROL | Manual or Automatic |

DUX AUTOMATIC SPECIFICATIONS

| | |
|--|---|
| BODY MATERIAL | Anodized Aluminum |
| FLUID PASSAGE MATERIAL | Stainless Steel |
| AVAILABLE AIR CAPS | A0 Low Solids (Alum) A1 General Purpose (Alum & SS) A2 High Solids (Alum) |
| GUN WEIGHT (w/o Mounting Hardware) | Standard Fluid Supply: 1.1 lbs Circulating Fluid Supply: 1.2 lbs |
| MAXIMUM ATOMIZING AIR INLET PRESSURE* | A0 Air Cap: 10 psi A1 Air Cap: 10 psi A2 Air Cap: 10.1 psi |
| MAXIMUM FLUID INLET PRESSURE | 75 psi |
| REQUIRED TRIGGERING AIR PRESSURE | 35 psi |
| FAN CONTROL PRESSURE | 2-20 psi |
| MAXIMUM AVAILABLE FAN PATTERN (at 9" spray distance) | 16" |
| AIR CONSUMPTION | A0 Air Cap: 9.1 scfm A1 Air Cap: 9.6 scfm A2 Air Cap: 11.0 scfm |

*When operated to maintain HVLP compliance (10 psi or less at the air cap)

DUX AUTOMATIC AIR/FLUID FITTINGS

| | |
|---|--|
| ATOMIZING AIR INLET | Quick Disconnect/Push Lock Swivel Fitting for 3/8" Diameter Tubing |
| TRIGGERING AIR INLET | Quick Disconnect/Push Lock Swivel Fitting for 1/4" Diameter Tubing |
| FLUID INLET/OUTLET | Quick Disconnect/Push Lock Swivel Fitting for 3/8" Diameter Tubing |
| FAN CONTROL INLET (Auto Fan model Only) | Quick Disconnect/Push Lock Swivel Fitting for 3/8" Diameter Tubing |



advanced research environmental atomization

3325 South 116th Street, Suite 161 | Seattle, WA 98168 1974 USA | tel 888 DUX AREA (888 389 2732) fax 866 876 1233 | www.duxarea.com

The design and technology forming the basis of this product is the confidential information of DUX AREA Inc., a Washington corporation. The relevant US Patent Numbers are: US 6,793,157; US 6,425,533, and U.S. 7,004,404. DUX AREA Inc. may have additional patents, patent applications, trademarks, copyrights, or other intellectual property rights covering subject matter in this document. Except as expressly provided in any written license agreement from DUX AREA Inc., this document does not grant you any license to or rights in any such patents, trademarks, copyrights, or other intellectual property.

DUX, DUX Area, DUX Gravity Feed, DUX Pressure Feed, DUX Automatic are either registered trademarks or trademarks of DUX AREA Inc. in the United States and/or other countries.

© 2006 DUX AREA Inc. All rights reserved. Printed in the United States of America

Rev. 2 Part# 510044